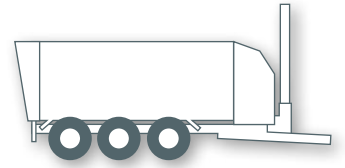




Transported by Passion



Silage Transfer Trailers  
**SUW**

# SUW 4000

Load volume 40 cubic metres



# SUW 5000

Load volume 50 cubic metres





Transported by Passion



### 280 degree swivel range

The discharge spout on the HAWE SUW silage transfer trailer is hydraulically adjustable in all directions. The 280 degree spout swivel range allows optimum filling of haulage vehicles from the SUW.

### Maximum load capacity

The high discharge speed of the high-performance blower improves silage compaction by approx. 30% compared with other unloading methods. More silage can be transferred to the transport vehicle, allowing full use of the maximum transport capacity at all times.



## HAWE Silage Transfer Trailers SUW

This tried-and-tested vehicle concept uses proven components from the HAWE range: the rear gate/metering plate, three metering rollers and two augers transport the chopped silage to the blower with pre-accelerator.

[www.hawe-wester.de](http://www.hawe-wester.de)

## Silage Transfer Trailers SUW



The standard specification walls on the HAWE SUW are made from **stainless steel**. Equipment with wooden walls is available on request,



### Wall extension

Tridem vehicles can optionally be fitted with a hydraulic wall extension, increasing the transport volume to 60 cubic metres. This equates to a full truck load and avoids unnecessary waiting times for haulage vehicles.



### User-friendly controls

User-friendly electrohydraulic controls for all functions are included as standard.



## HAWE Silage Transfer Trailers SUW

HAWE Wester offers an innovative, economical concept for overloading silage on the edge of the field. It is also possible to transport wood chips and over-load. The powerful blower has an discharge capacity of 11 cubic metres per minute. Thus, HAWE SUW offers maximum performance and efficiency.



Transported by Passion

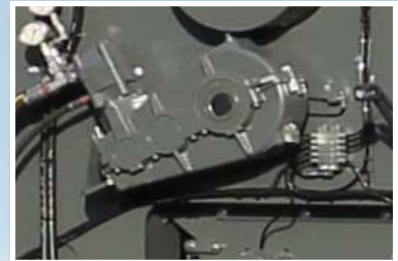
### Chain tensioning

The automatic scraper floor chain tensioning system is included in the standard specification.



### Scraper floor via

spur gear and hydraulic drive



The **central lubrication** is with up to 40% less fat consumption environmentally friendly. It works fully automatically during operation, thus reducing operating and maintenance costs while extending service intervals.

## Silage Transfer Trailers SUW



### Filling biogas plants

Outside the silage season, the HAWE SUW can be used conveniently and efficiently to fill biogas plants. It fills the input batch feeder quickly and accurately at a rate of approximately 10 cubic metres per minute.



### Rear unloading

A fast rear unloading system with a special drive is available as an option. This allows the HAWE SUW to be used as a silage transport trailer during the maize and grass harvest.



### Outstanding stability

thanks to the wide chassis and low centre of gravity.



### Large tyres

HAWE offers a wide range of low-compacton tyres.





Transported by Passion

## Tyre options for all SUW models

large-volume tyres reduce the tractive power requirement and prevent soil compaction even under wet conditions. The relatively large contact area minimises rolling resistance so the tyres keep rolling even under difficult conditions.



### Alliance Flotation 328

- Standard equipment on all HAWE Universal Spreaders
- Diagonal flotation tyres for trailed vehicles with tread pattern which minimises soil damage



### BKT FL 630 Super

- The ideal tire for a multipurpose use on road and field
- Uniform running and high resistance



### BKT RIDEMAX FL 693 M

- For 75 per cent road use
- Excellent performances on the road.
- High comfort and self-cleaning
- Speed index class D/E for higher speeds on road journeys while saving significantly time
- Low rolling resistance for fuel savings



### Michelin CARGO X BIB High Flotation

- High-quality tyre for road transport
- High load capacity and large riot area
- Precise guidance and low rolling resistance
- Particularly suitable for tyre pressure control systems



Transported by Passion

## Specifications

Type	SUW 4000	SUW 5000
Capacity (cubic metres)		
Level load	42	48
Heaped load	45	52
With hydr. wall extension (optional)	-	60
Permitted gross weight (t)	23	33 (Option 34)
Running gear type	Tandem	Tridem
Body		
Length (m)	7,50	8,50
Width (m)	2,30	2,30
Height (m)	2,30	2,30
Gesamtfahrzeug		
Length (m)	11,10	12,00
Width (m)	2,55	2,55
Height (m)	3,98	3,98
Unloading rate (cubic metres/minute)	11 Spout pivots through 280 degrees, unloads to left or right. Option: Rear unloading in approx. 1 minute	
Standard tyres	710/50 R 26,5	
Power requirement	ab 280 PS / 210 kW	

**Standard equipment:** Automatic scraper floor chain tensioning, bottom hitch, K 80 ball hitch, hydraulic drawbar suspension, PTO shaft with overload safety system, steering axles with tandem and tridem running gear, dual-circuit air brakes, ALB, TÜV approval, 40 km/h, mechanical running gear suspension.

**Additional equipment:** Camera system, positive steering, hydraulic running gear suspension, quick-unload system at rear with reinforced drive, hydraulic wall extension (only for SUW 5000 tridem), central lubrication system.

HAWE is constantly updating its product range. We reserve the right to alter technical specifications, prices and models at any time. Illustrations and specifications are only approximate.

HAWE Wester GmbH & Co. KG  
 Zum Turm 16 · 26892 Wipplingen  
 Phone +49 (0)4966 / 91880 · Fax +49 (0)4966 / 1211  
 mail@HAWE-wester.de · www.HAWE-wester.de