



Transported by Passion



Universal Spreaders

DST



Transported by Passion

DST 12

Load volume 10 / 13 cubic metres



DST 20 / DST-A 20

Load volume 16 / 18.5 cubic metres



DST 16

Load volume 13.5 / 16.5 cubic metres



DST 22

Load volume 16 / 18.5 cubic metres





Transported by Passion

DST 24 / DST-A 24

Load volume 18 / 20 cubic metres



DST 32 / DST-A 32

Load volume 20 / 23 cubic metres



DST 30 / DST-A 30

Load volume 19 / 21 cubic metres



DST 34

Load volume 27 / 30 cubic metres



www.hawe-wester.de



Transported by Passion

Drop deck spreader TST

TST 14

 Load volume 13 / 15 cubic metres

The low design with a **low loading height** of approx. 2.75 m enables uncomplicated loading and a low center of gravity for safe safe driving behavior.



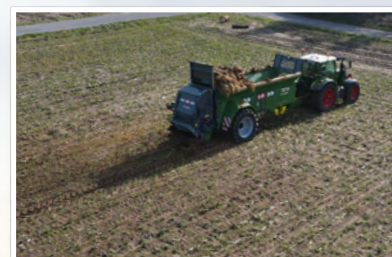
Hydraulic drawbar suspension for higher driving comfort and the possibility to adjust the drawbar height to the respective tractors.



On the front wall a **large window** and a stone catcher with an indicator for the slide gate height.



The **scraper floor** with the conveyor slats is divided into two strands. In total four 14 x 50 mm chains with closed scraper floor slats.



Optionally, all components for **precision farming**, can be be equipped.



HAWE Drop deck spreader TST

The TST 14 offers a large loading volume combined with compact overall dimensions and an overall width of 3 meters. The tub is self-supporting with a one-piece base plate made of 5 mm steel plate and 4 mm side walls. The tire size VF 710/70 R42 (tire diameter 206 cm) ensures very low rolling resistance and easy traction.

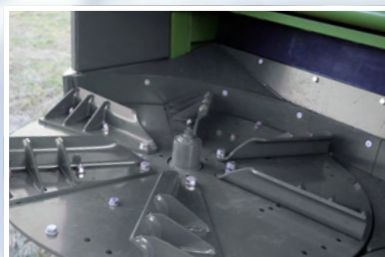
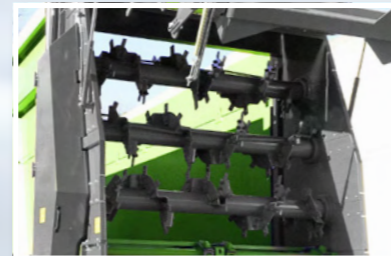
www.hawe-wester.de



Transported by Passion



Two **horizontal beaters** with bolted, highly wear-resistant spreader tines made from Hardox steel, reversible. Bearing has antiwrap system. Spreader hood with plastic plate to protect against stones.



Spinning discs with six adjustable spreading blades. Replaceable Hardox wear strips.



Simple manual height and width adjustment of the lower section of the **spreader hood** to enable spreading of different materials. Material flow to the spinning discs is optimised for precise distribution. Spreading cone for more accurate distribution of light materials (compost, dried poultry manure, etc.).



Visual monitoring of the automatic chain tensioning system.



Four **flat link chains** 78.5 mm or 100 mm partition for heavy applications.



Four **scraper floor chains**, each chain 14 x 50 mm 25 t breaking strain. Enclosed scraper floor slats, every fourth slat is a cleaning slat.



Drive for flat link chain with high-strength sprockets.



Scraper floor shaft mounted on three bearings. High level of self-cleaning thanks to scrapers in each chain sprocket.



Scraper floor driven by spur gearbox, on right when facing in direction of travel, central lubrication bar for beater rotor bearings.

HAWE Universal Spreader

HAWE large-capacity Universal Spreaders are designed for non-stop professional work. The use of high-quality components guarantees a long service life. The spreading system with two horizontal beaters, regulating gate and spinning discs is DLG tested and enables accurate application of different materials over a maximum width of 24 metres.

www.hawe-wester.de

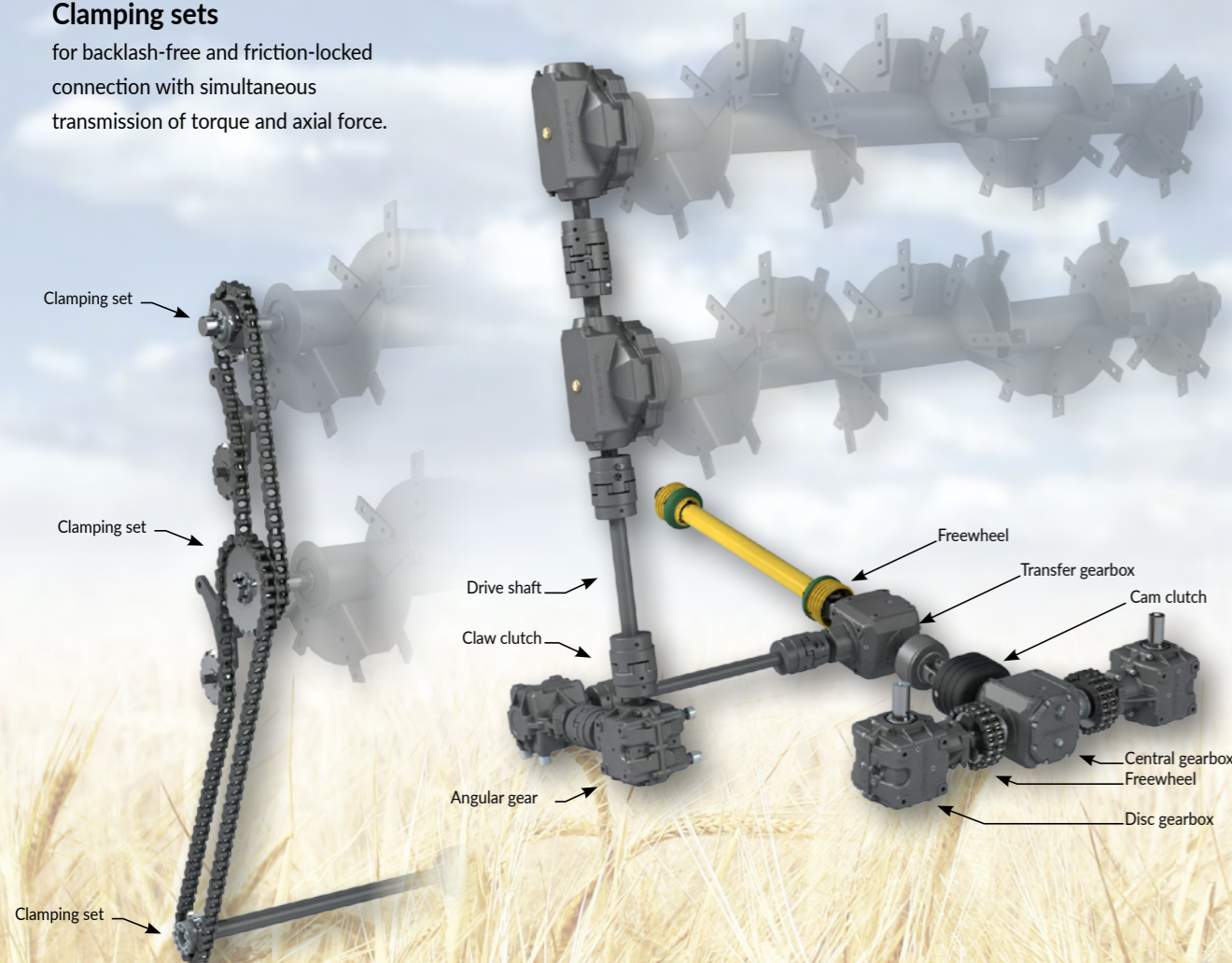
Spreader roller drive

With roller chains

Spreading roller drive with roller chains. Automatic chain lubrication by means of oil pump.

Clamping sets

for backlash-free and friction-locked connection with simultaneous transmission of torque and axial force.



With cardan shafts

Optional maintenance-free, smooth-running drive via angular gear and shafts with special couplings for noise reduction.

Tyre options to meet every need

Large-volume tyres reduce the tractive power requirement and prevent soil compaction even under wet conditions. The relatively large contact area minimises rolling resistance so the tyres keep rolling even under difficult conditions.



BKT RIDEMAX FL 693 M

- The ideal tyre for a multipurpose use on road and field
- Excellent performances on the road.
- High comfort and self-cleaning
- Low rolling resistance for fuel savings



BKT FL 630 Super

- The ideal tyre for a multipurpose use on road and field
- Uniform running and high resistance



Alliance AGRIFLEX + 389 VF

- The Alliance 389 VF flotation tyre with „Very High Flexion“ technology can be used with 30% lower tyre pressure
- Suitable for field use as well as for road transport



Michelin TRAILXBIB High Flotation

- For low soil compaction and optimised yields
- New VF casing designed for robustness and low pressure impact
- Very good self-cleaning
- Specific tread pattern design aids the evacuation of mud

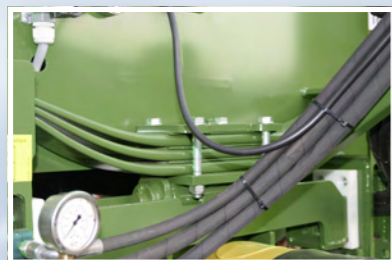
The heavy-duty drive train

On all HAWE Universal Spreaders, the drives for the beater rotors and spinning discs are fitted as standard with **WALTERSCHEID** overload clutches and freewheels.

High-quality gearboxes from **ROGELBERG** Getriebe



Transported by Passion



Drawbar, mechanical suspension with upper/lower drawbar.



Drawbar, hydraulic suspension with lower drawbar.



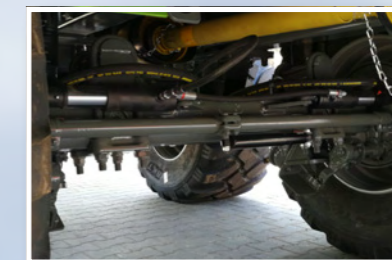
On request, **LED work lights** available inside and behind.



Suspended **LED-rear lights**.



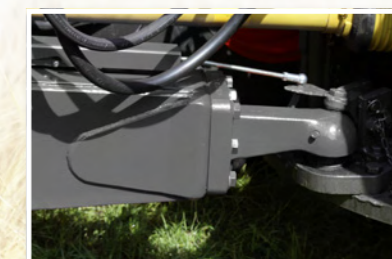
The **central lubrication** is with up to 40% less fat consumption environmentally friendly. It works fully automatically during operation, thus reducing operating and maintenance costs while extending service intervals.



Self-steering axle has hydraulic locking system, with automatic alignment for optimum directional stability.



Running gear with **hydraulic suspension**, incl. lift axle.



The **positive steering system** is controlled by a Bowden cable.

HAWE Universal Spreader

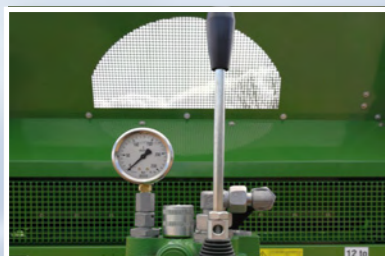
All coupling options for upper or lower drawbar that are currently available on the market can be used. Drawbar loads of up to four tonnes are possible. Drawbars can optionally be supplied with mechanical or hydro-pneumatic suspension, providing contractors and large farms with the right system for their operation.

www.hawe-wester.de



Transported by Passion

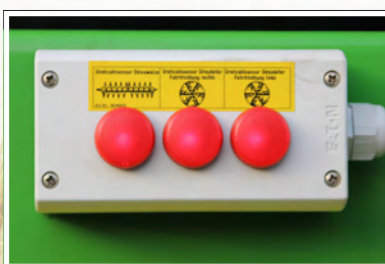
Control systems



Manual controls with continuously variable scraper floor speed control, mounted on the drawbar.



Electrohydraulic controls with continuously variable scraper floor speed control and digital display.



Speed monitoring of beaters and spinning discs with scraper floor stop system.



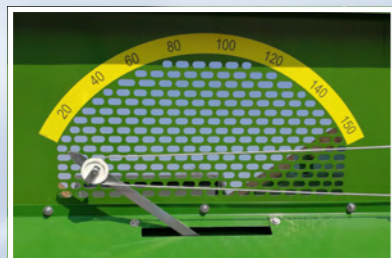
ISOBUS control
HAWE-Wester ISOBUS control for operating and controlling all essential functions.



Weighing system
High-precision weighing system for HAWE-Wester Smart Farming (option).



Transported by Passion



Indicator for regulating gate height, transparent side wall at front with a view through to the rotors.



Protective grille at the front, transparent front wall and folding ladder on right when facing in the direction of travel. Wooden fork-cleaning strip.



Side wall extension, 300 mm for compost or other light materials.



Hydraulic Side wall extension, 300 mm for compost or other light spreading material.



The **cathodic dip primer** is free of heavy metals. The KTL penetrates into even the smallest cavities. This means that all components are evenly coated.



At the **powder coating**, the applied powder is baked in the oven at 190° C and fused by the action of heat to a resistant layer.



www.hawe-wester.de

Precision Farming

HAWE-Wester Smart Farming

is a method for targeted fertilizer application on agricultural land. The position of the HAWE universal spreader is recorded on the fields and the application rate can be adjusted accordingly. The optimized, small-scale application can thus contribute to savings in operating resources and an ecological footprint.



The **HAWE-Wester ISOBUS-system** enables GPS-controlled, site-specific spreading of the spreading materials. The GPS-supported operation ensures that the spreading material is exactly where it is needed in the specified quantities required to optimize yields.



The **HAWE-Wester ISOBUS control system** processes all common formats of different systems.

Requirements for Smart Farming:

- Specific field map with the determination of the yield potential.
- Application map with site-specific application rates
- Tractor with ISOBUS terminal, task controller and GPS receiver
- HAWE-Wester universal spreader with ISOBUS control and special weighing system

Mode of operation:

- The position of the universal spreader is determined in the field by GPS.
- Real-time adjustment with the application map
- Automatic adjustment of the application rate by controlling the scraper floor flow rate, taking into account the metering gate setting and speed



The high-precision **weighing system** from HAWE-Wester is a prerequisite for efficient, precise fertilizing. During spreading, this new system the spreading process and compares it and compares it with the target application rate. This ensures highest precision, even with spreading with fluctuating volume density.

The weighing system is fully integrated into the ISOBUS software. Through the creation of an application map the setpoint volume can be adjusted within a vary within a field - depending on soil and yield expectations.

The combination of optimum target rate and maximum precision you can reduce fertilizer costs and increase for fertilization and increase your yield. The system is compatible with various data formats of all common field maps.

Your benefits

- Precise metering of the desired spread rate
- Yield increase per hectare
- Plant-appropriate nutrient supply for inhomogeneous stands
- Valuable fertilizer is used effectively!
- Cost reduction



Transported by Passion

Specifications

TYPE	TST 14	DST 12	DST 16	DST 20 DST-A 20	DST 22	DST 24 DST-A 24	DST 30 DST-A 30	DST 32 DST-A 32	DST-A 34
Permitted gross weight (t)	14	12	16	20	23	24	31	34	34
Trailer body dimensions (m)									
Length (to gate)	5.85	4.75	5.35	5.85	5.85	6.45	6.95	7.35	7.95
Width (conical)	1.35	2.10	2.10	2.10	2.10	2.10	2.10	2.10	2.10
Height (side wall)	1.50	0.90	1.10	1.30	1.30	1.30	1.30	1.30	1.30
Overall dimensions (m)									
Length	6.50	5.40	6.00	6.50	6.50	7.10	7.60	8.00	8.60
Load height (m)	2.75	2.40	2.60	2.80	2.90	2.90	2.90	2.90	2.90
Load volume (cubic metres)*	13 / 15	10 / 13	13.5 / 16.5	16 / 18.5	16 / 18.5	18 / 20	19 / 21	20 / 23	27 / 30
Spreader clearance, height (m)	1.50	1.30	1.50	1.50	1.50	1.50	1.50	1.50	1.50
Optional				1.80	1.80	1.80	1.80	1.80	1.80
Scraper floor chain: 4 chains each	Round steel chain 14 mm ϕ x 50 mm Breaking strain approx. 25 t per chain Flat link chain 78.5 mm or 100 mm on request						Flat link chain 78.5 mm (100 mm)	Flat link chain 100 mm	Flat link chain 100 mm
Running gear type BPW axles	single	single or tandem	tandem				tridem		
Brakes	Dual-circuit air brakes			Dual-circuit air brakes with ALB					
Suspension	Rigid axle	16 t GK float unit or single axle, suspended	16 t GK-float unit	24 t LK-float unit	24 t LK-float unit	32 t LK-float unit	36 t LK-float unit	48 t LK-float unit	48 t LK-float unit
Distance between axles (mm)		1320	1320/1550	1550	1810	1810	1550	1810	1810
Steering axle(s), self-steering		Option	Option	Standard	Standard	Standard	Standard	Standard	Standard
Attachment point									
Max. drawbar load (t)	4	2	2	3	3	4	3	4	4
Upper, drawbar eye, 40 mm		Standard	Standard	Standard	-	-	-	-	-
Bottom K80	Standard	-	Option	Option	Standard	Standard	Standard	Standard	Standard
Drawbar suspension	Hydraulic	Option	Standard	Standard	Standard	Standard	Standard	Hydraulic	Hydraulic

*1st figure = volume with level load (to top of sides), 2nd figure = volume with heaped load up to height of spreader system
Basic equipment for all large-capacity Universal Spreaders: Strong, torsion-resistant, tapered frame construction with fully welded steel side walls with fork-cleaning strips (wooden), transparent protective grille at the front, four scraper floor chains, two spinning discs with overload safety system, two horizontal beaters, vertical regulating gate, wide-angle drive shaft with overload safety system, 40 km/h, dual-circuit air brakes, TÜV approval, lighting in accordance with German Road Vehicle Registration Regulation (StVZO).

The HAWE product range is constantly being further developed. We reserve the right to change technical specifications, prices and models at any time. Illustrations and figures approximate and non-binding.

HAWE Wester GmbH & Co. KG
 Zum Turm 16 · 26892 Wipplingen
 Phone +49 (0)4966 / 91880 · Fax +49 (0)4966 / 1211
 mail@HAWE-wester.de · www.HAWE-wester.de